



Larry H. & Gail Miller Arts Center Fact Sheet

Overview

The Larry H. & Gail Miller Arts Center (Miller Arts Center) is the newest Salt Lake County facility and will act as a regional cultural center venue in the heart of Downtown Daybreak in South Jordan, adjacent to The County Library's Daybreak Branch and the Ballpark at America First Square.

This Regional Cultural Center includes spaces and places to serve the needs of the county's thriving arts community. It addresses the long-documented demand for live performing arts and visual arts spaces as identified in Arts & Culture's 2008 and 2020 Cultural Master Plans.

Miller Arts Center Logo



MILLER
ARTS
CENTER

The official logo and branding are inspired by the architectural roofline of the building, with the logo incorporating a stylized "M" form that reflects the structure's distinctive silhouette. The accompanying color palette draws from the warm, natural tones of the surrounding landscape, reinforcing the center's connection to place and community.

Project Budget

The Miller Arts Center project budget is \$90 million. The venue is made possible through a transformative \$25 million contribution from the Larry H. & Gail Miller Family Foundation to Salt Lake County, and from the donation of approximately three acres of land by the Larry H. Miller Real Estate Company. The remaining \$65 million was proposed by Mayor Jenny Wilson and approved by the Salt Lake County Council.

Project Team

The project design and construction team includes Salt Lake County Arts & Culture, County Facilities, Method Studio architecture, theater planning firm The Shalleck Collaborative, Construction Control Corporation, with Layton Construction Company as the contractor for the project.

Salt Lake County Arts & Culture provides the spaces, places, services and programs to engage with the arts. We are the stewards of Maurice Abravanel Hall, Janet Quinney Lawson Capitol Theatre, George S. and Dolores Doré Eccles Theater, Mid-Valley Performing Arts Center, and the Rose Wagner Performing Arts Center, Utah Museum of Contemporary Art, and the new Larry H. & Gail Miller Arts Center.

Our programs include Zoo, Arts, and Parks (ZAP), Community Engagement, and the Art in Public Places program, that oversees the county's Visual and Percent for Art Collections.

Method Studio is a multidisciplinary architecture, planning, and interior design firm with offices in Salt Lake City and St. George, Utah; Rexburg, Idaho; and Raleigh, North Carolina. The firm has built its reputation on exceptional client service—reflected in a 97% repeat client base—and a belief that thoughtful design makes a meaningful difference.

Method fosters a collaborative culture centered on teamwork, design excellence, and a deep commitment to the communities where its projects are envisioned and built. In addition to the Miller Arts Center, Method has been fortunate to contribute to many significant cultural arts projects throughout the region, including the Mid-Valley Performing Arts Center, The Noorda Center for the Performing Arts, the Ruth & Nathan Hale Theatre, and the Canyon View Community Arts Center.

The Shalleck Collaborative offers comprehensive consulting services in the planning and design of facilities for the performing arts, assembly spaces of all types. They also plan and design all forms of theatre production and AV systems.

Other projects include Salt Lake County's Mid-Valley Performing Arts Center, The Ruth and Nathan Hale Theatre in Pleasant Grove, Utah, and the George S. and Dolores Doré Eccles Music Center at Southern Utah University (opening this year).

Construction Control Corporation is a Utah company that has provided owner's representative services and cost consulting services for the construction industry since its founding in 1984. They managed one of the first building projects to receive LEED Certification in the state of Utah, the Salt Palace Phase III expansion, and managed one of the first projects in the state to receive a LEED Platinum Certification, the Swaner Eco Center.

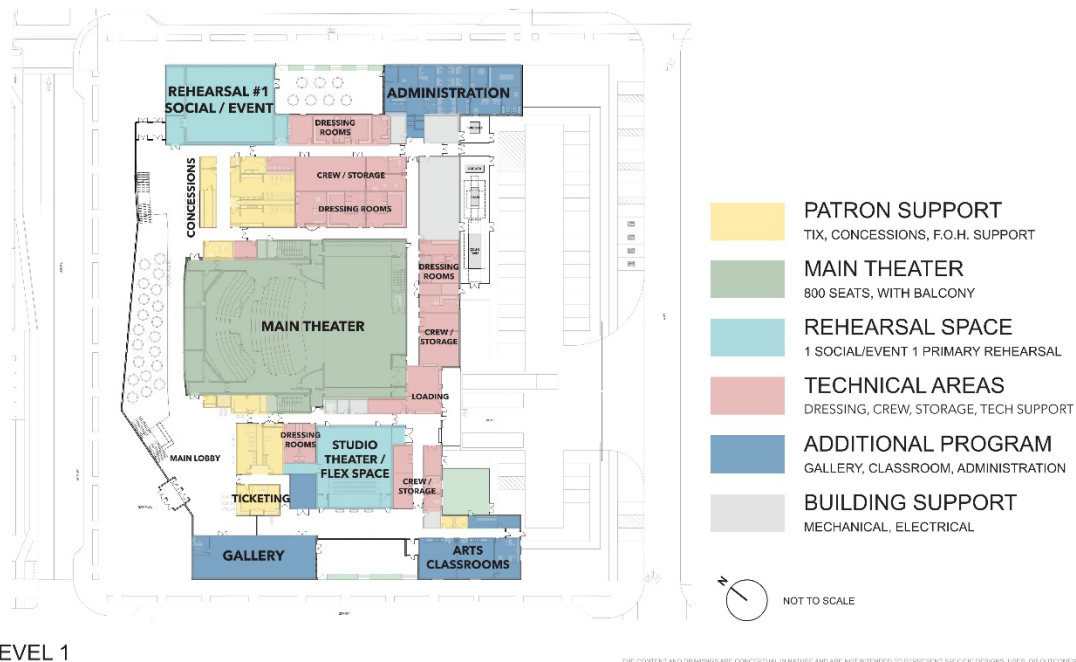
Other projects include Mid-Valley Performing Arts Center, Rowland Hall St. Marks School, Salt Palace Convention Center and Capitol Theatre. Their clients include architects, owners, developers, contractors, and government entities.

Layton Construction is a privately held national general contractor, delivering predictable outcomes in commercial construction since 1953. Headquartered in Salt Lake City, Utah, Layton operates from 16 strategic offices across the United States, employing more than 1,700 construction professionals who serve diverse markets including healthcare, education, commercial office, industrial, hospitality, and multi-unit residential. Founded on the core values of honesty, unity, safety, and quality, Layton has built a reputation for excellence in complex project delivery while maintaining strong partnerships with clients, architects, and trade partners nationwide.

Layton Construction's performing arts portfolio includes the George S. and Dolores Dore Eccles Theater, Hale Centre Theatre, The Ruth and Nathan Hale Theatre, and UVU's Noorda Center for the Performing Arts.

Miller Arts Center Spaces

- 89,400 total square feet
- 800-seat Main Stage Theatre
 - This theatre size fills a long-standing gap in Salt Lake County
- 99-seat Studio Theatre/Flex Space
- A flexible social event and rehearsal room
- Dedicated visual art gallery
- Two arts classrooms
- Four Percent for Art installations



Services

ArtTix – Professional, in-house, authorized ticketing services and ticket office management.

Event Management – Start-to-finish client event oversight, including ticketing, theater operations, and patron services.

Technical Management – Technical theater operations management including stage, lighting, and sound.

Patron Services – Front-of-house support for patron seating, accessibility, and safety.

Percent for Art Installations

Miller Arts Center will feature four site-specific art installations as part of the county's [Percent for Art collection](#). Two of the four artists have been chosen through a public selection process and the other two will be chosen in the coming months.

As part of the Salt Lake County Art in Public Places program, the Percent for Art collection includes site-specific artworks at county facilities. These pieces are funded by the Percent for Art Ordinance, which sets aside 1% of capital improvement or development project funds to commission and install these artworks.

Interior - [April Wagner](#), a glass artist from Michigan, will create the interior piece titled *I'll Be The Grass*. Her work is held in prominent collections worldwide, and she leads a 4,000-square-foot, world-class glassblowing studio.

Exterior - [Ben Butler](#) is a sculptor and public artist based in Memphis, Tennessee, and Quogue, New York. He has created pieces for public spaces including the Hyatt Regency Chicago and the Crosstown Arts Theater in Memphis.

Southwest Entrance



Northwest Entrance







MAIN STAGE THEATER



REHEARSAL / EVENT SPACE



STUDIO THEATER / FLEX SPACE



MAIN LOBBY



ARTS CLASSROOMS



VISUAL ARTS GALLERY

THE CONTENT AND DRAWINGS ARE CONCEPTUAL IN NATURE AND ARE NOT INTENDED TO REPRESENT SPECIFIC DESIGN USES, OR OUTCOMES.

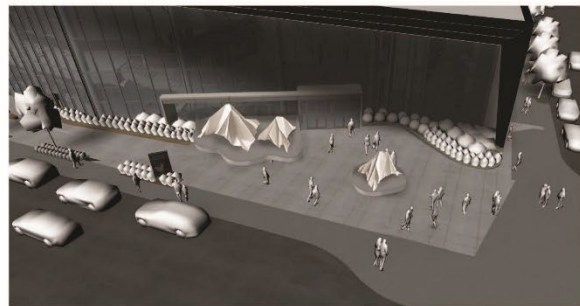


Percent for Art Installation Renderings

These conceptual renderings represent the artist's vision. Final artwork and details may change during the design process.



April Wagner, *I'll Be the Grass*, hand-pulled glass



Ben Butler, *Mountain Folds*, welded steel





NORTH ELEVATION



SOUTH ELEVATION

THIS CONCEPT AND DRAWINGS ARE CONCEPTUAL IN NATURE AND ARE NOT INTENDED TO REPRESENT SPECIFIC DESIGN, USES, OR OUTDOORS.



EAST ELEVATION



WEST ELEVATION

THIS CONCEPT AND DRAWINGS ARE CONCEPTUAL IN NATURE AND ARE NOT INTENDED TO REPRESENT SPECIFIC DESIGN, USES, OR OUTDOORS.

